

*Kankakee Community College*

# *Class Schedule*

*SPRING 2024*

**ENROLL  
NOW!**

**Register  
online**

Most returning students  
can register online.

---

**View the  
Class  
Schedule**

[kcc.edu/schedule](http://kcc.edu/schedule)

---

**INFORMACIÓN  
EN ESPAÑOL  
815-802-8586**

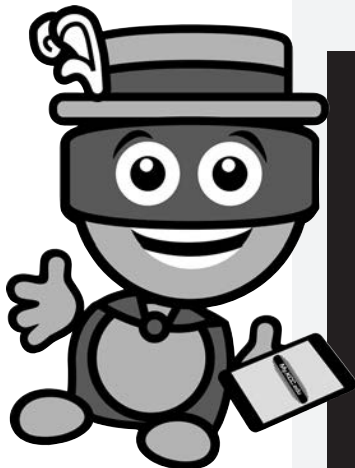
**[www.kcc.edu](http://www.kcc.edu)**

# Class Schedule

SPRING 2023

**Spring classes**  
Pages 3-17

**Classes starting  
after March 1**  
Pages 18-19



## Student portal – personalized info

### My.kcc.edu

- One stop/single sign-on using your KCC username and password
  - Class scheduling
  - Canvas
- Register for classes
  - Student email
  - KCC news

### Other info online:

Registration information  
[www.kcc.edu/register](http://www.kcc.edu/register)

Academic calendar  
[www.kcc.edu/calendar](http://www.kcc.edu/calendar)

Tuition/payments etc.  
[www.kcc.edu/payoptions](http://www.kcc.edu/payoptions)

Financial aid  
[www.kcc.edu/finaid](http://www.kcc.edu/finaid)

Scholarships  
[foundation.kcc.edu/scholarships](http://foundation.kcc.edu/scholarships)

Extension Centers  
[www.kcc.edu/sec](http://www.kcc.edu/sec) (Watseka)  
[www.kcc.edu/nec](http://www.kcc.edu/nec) (Bradley)

Workforce Investment and  
Opportunity Act  
[wioa.kcc.edu](http://wioa.kcc.edu)

Withdrawal policies  
<https://www.kcc.edu/academics/register/#cancellations-withdrawals-and-refunds>

Continuing education and Career Services  
(non-credit options)  
[continuinged.kcc.edu](http://continuinged.kcc.edu)

Transfer Services  
[www.kcc.edu/transfer](http://www.kcc.edu/transfer)

Program list  
[catalog.kcc.edu/programs-of-study-by-area](http://catalog.kcc.edu/programs-of-study-by-area)

## New to KCC?

**Submit an application**  
<http://apply.kcc.edu>

### Questions?

- Visit [www.kcc.edu](http://www.kcc.edu)
- Phone 815-802-8500
- Email [studentservices@kcc.edu](mailto:studentservices@kcc.edu)

THE POWER OF COMMUNITY

On the front cover: KCC Student Marc Robertson.

# Spring college credit classes

## Key to locations

**D** - Workforce Development Center  
**F** - Ice Valley Centre  
**G** - George H. Ryan Activities Center  
**HSP** - Hospital  
**IMH** - Iroquois Memorial Hospital  
**L** - Library Building  
**LTC** - Long Term Care Facility  
**M** - Health Careers Center for Excellence  
**MT** - Manufacturing and Industrial Technology Center, Rt. 45-52  
**N/NEC** - North Extension Center, Bradley  
**ONU** - Olivet Nazarene University  
**R** - Arts & Sciences Building  
**RMC** - Riverside Medical Center  
**ROL** - Riverside Outpatient Lab  
**SE/SEC** - South Extension Center, Watseka  
**SJMC** - St. Joseph Medical Center, Joliet  
**SJP** - St. James Hospital, Pontiac  
**SMH** - St. Mary's Hospital  
**T** - Advanced Technology Education Center  
**TBA** - To be announced  
**V** - Technology Building  
**VA** - Visual Arts Building - West Campus  
**W** - Prairie Building

## Notes and information

Course title Credit hours - Price  
**General Accounting** 3 cr. hrs. – \$483

**ACCT 1413.010** 12-12:50 p.m. MWF D328  
 Course no./section Time Days Room

**Notes:** For course descriptions and prerequisites, please consult [catalog.kcc.edu](http://catalog.kcc.edu) or [kcc.edu/schedule](http://kcc.edu/schedule). Prerequisites may include test scores, college level courses, high school courses or proficiencies. Instructors are subject to change without notice. Prices do not include books and supplies.

### Symbols in course listings

- ◆ Course designed to prepare students for college-level coursework.
- \* Appropriate assessment score required

### Course delivery options

**In person:** Students attend class at KCC during specific times and days. Students and professors interact face-to-face in small class sizes. Whenever needed, applicable physical distancing and other established health and safety measures are followed.

**Online and Hybrid courses:** When enrolled in online and hybrid courses, students should be ready to ask and answer questions, participate in discussions, and take tests online. These courses require a reliable Internet connection (preferably high-speed). Students in online and hybrid courses must understand basic computing, email, word processing and Internet navigation.

Email [helpdesk@kcc.edu](mailto:helpdesk@kcc.edu) or phone 815-802-8900 for more information regarding technology requirements.

**Hybrid course:** Hybrid courses combine face-to-face and online instruction and activities. A portion of the course instruction/content is delivered face-to-face in a classroom setting while a portion of the course instruction/content is delivered online through KCC's learning management system (Canvas). Course instructors will explain specific course requirements to students in detail during their first on-campus meeting or online interaction.

**Online course:** All content/instruction is online and accessible through KCC's learning management system (Canvas) with regular and substantive interaction between students and the instructor. Students can finish an online course without coming to KCC's campus, but may be required to take tests/assessments in a pre-approved testing center.

## Most classes begin the week of

**Monday, Jan. 8**

(except where otherwise indicated)

### Accounting

#### General Accounting

**ACCT 1413.950** 9-11:30 a.m. MW NEC 3 cr. hrs.  
**\*\*North Extension Course\*\***

#### Financial Accounting

**ACCT 1514.010** 9-10:40 a.m. TTh L372 4 cr. hrs.  
**ACCT 1514.H01** Hybrid 1-1:50 p.m. MW L377

#### Managerial Accounting\*

**ACCT 1523.010** 2-3:15 p.m. MW L372 3 cr. hrs.

## Agri-Hort

#### Engineering Applications

**AGHT 1024.810** 5-6:40 p.m. TTh VA03 4 cr. hrs.  
**\*\*West Campus\*\***

#### Basic Soils

**AGHT 1254.010** 12:15-1:55 p.m. TTh VA03/VA08 4 cr. hrs.  
**\*\*West Campus\*\***

#### Internship

**AGHT 2012.010** 2 cr. hrs.

#### Special Topics

**AGHT 2022.010** 2 cr. hrs.

#### Plant Science

**AGRC 1724.H01** Hybrid 2:30-4:10 p.m. TTh VA03 4 cr. hrs.  
**\*\*West Campus\*\***

#### Plant Propagation

**HORT 1023.H01** Hybrid 10-11:15 a.m. TTh VA03 3 cr. hrs.  
**\*\*West Campus\*\***

Learn about online and hybrid courses at [bit.ly/KCC-course-delivery](http://bit.ly/KCC-course-delivery)

\*Course has prerequisite or testing requirements. ◆ Course designed to prepare students for college-level coursework.

Visit [www.kcc.edu/schedule](http://www.kcc.edu/schedule) for the current Spring 2024 schedule

## SPRING CREDIT CLASSES

### Air Conditioning & Refrigeration

**Fundamentals of Air Conditioning** 4 cr. hrs.  
 AIRC 1014.961 5:30-10:30 p.m. TTh MITC  
 (01/08-03/01) \*\*MITC Course\*\*

**Domestic Refrigeration\*** 4 cr. hrs.  
 AIRC 1114.961 5:30-10:30 p.m. TTh MITC  
 (03/11-05/03) \*\*MITC Course\*\*

**Heating Plants\*** 4 cr. hrs.  
 AIRC 1214.961 5:30-10:30 p.m. W MITC  
 \*\*MITC Course\*\*

**Air Handling\*** 3 cr. hrs.  
 AIRC 1313.961 5:30-9:30 p.m. M MITC  
 \*\*MITC Course\*\*

**Installation Skills\*** 2 cr. hrs.  
 AIRC 1422.960 1-3:30 p.m. M MITC  
 (01/08-03/01) \*\*MITC Course\*\*

### American Sign Language

**American Sign Language I** 3 cr. hrs.  
 SIGN 1503.010 4-5:15 p.m. MW D326

**American Sign Language II** 3 cr. hrs.  
 SIGN 1513.010 5:30-6:45 p.m. MW D326

### Anthropology

**Introduction to Anthropology\*** 3 cr. hrs.  
 ANTH 1713.010 12:30-1:45 p.m. TTh R306

### Art

**Basic Drawing** 3 cr. hrs.  
 ARTS 1503.H01 Hybrid 8:30-10:30 a.m. MW R114

**Two Dimensional Design** 3 cr. hrs.  
 ARTS 1513.010 4-6:30 p.m. MW R114 ?

**Art Appreciation\*** 3 cr. hrs.  
 ARTS 1553.010 10-10:50 a.m. TTh R116  
 11-11:50 a.m. TTh R107  
 ARTS 1553.020 11-11:50 a.m. M R116  
 12-12:50 p.m. M R107

ARTS 1553.W01 Online  
 ARTS 1553.W02 Online

**Drawing II** 3 cr. hrs.  
 ARTS 1603.H01 Hybrid 8:30-10:30 a.m. W R114

**Survey of Art-Renaissance to Rococo\*** 3 cr. hrs.  
 ARTS 1623.W01 Online (03/11-05/03)

**Non-Western Art\*** 3 cr. hrs.  
 ARTS 1643.W01 Online (01/08-03/01)

**Three Dimensional Design\*** 3 cr. hrs.  
 ARTS 1813.H01 Hybrid 1:30-4 p.m. MW R109

**Painting** 3 cr. hrs.  
 ARTS 2513.H01 Hybrid 11-11:50 a.m. MW R105  
 12-1:30 p.m. MW R105

**Painting II\*** 3 cr. hrs.  
 ARTS 2523.H01 Hybrid 11-11:50 a.m. MW R105  
 12-1:30 p.m. MW R105

### Automotive Technology

**Ignition & Electrical Systems II\*** 3 cr. hrs.  
 AUTO 1123.010 5:30-10:30 p.m. TTh V110/V122  
 (01/08-03/01)

**Automatic Transmissions** 3 cr. hrs.  
 AUTO 1223.010 12-4 p.m. MW V110/V122  
 (03/11-05/03)

**Computerized Engine Controls I\*** 3 cr. hrs.  
 AUTO 2013.820 5:30-10:30 p.m. TTh V110/V122

**Engine Diagnosis & Overhaul\*** 6 cr. hrs.  
 AUTO 2206.810 5:30-10:30 p.m. MW V110/V122

**Heating & Air Conditioning** 3 cr. hrs.  
 AUTO 2233.020 12-3:50 p.m. MW V110/V122  
 (01/08-03/01)

**Service Shop Operations II\*** 2 cr. hrs.  
 AUTO 2252.810 2-3:40 p.m. TTh V110/V122  
 (03/11-05/03)

### Biology

Attendance at the first laboratory meeting is required for all BIOL courses.

**Principles of Biology\*** 4 cr. hrs.

BIOL 1504.010 11 a.m. - 12:15 p.m. TTh R212  
 9-10:40 a.m. T R207  
 BIOL 1504.020 11 a.m. - 12:15 p.m. TTh R212  
 12:30-2:10 p.m. Th R207  
 BIOL 1504.810 5-6:25 p.m. MW R205  
 (01/22-05/09)  
 6:30-8:30 p.m. W R207  
 (01/22-05/09)

**General Biology I\*** 4 cr. hrs.  
 BIOL 1514.010 9-10:15 a.m. MW R205  
 10:20 a.m. - 12 p.m. W R207

**General Biology II\*** 4 cr. hrs.  
 BIOL 1524.010 8:30-9:45 a.m. TTh R212  
 10-11:40 a.m. Th R207

Learn about online and hybrid courses at [bit.ly/KCC-course-delivery](http://bit.ly/KCC-course-delivery)

\*Course has prerequisite or testing requirements. ♦ Course designed to prepare students for college-level coursework.

Visit [www.kcc.edu/schedule](http://www.kcc.edu/schedule) for the current Spring 2024 schedule

**Human Biology\*** 4 cr. hrs.

BIOL 1534.H01 Hybrid 12:30-2:40 p.m. W R210

**Intro to Anatomy & Physiology** 4 cr. hrs.

BIOL 1564.010 1-2:15 p.m. MW R212  
2:30-4:10 p.m. M R207

BIOL 1564.020 1-2:15 p.m. MW R212  
11 a.m. - 12:40 p.m. M R207

BIOL 1564.H07 Hybrid 12:30-2:45 p.m. W R207

**Anatomy & Physiology I\*** 4 cr. hrs.

BIOL 2644.010 1:30-2:45 p.m. MW R307  
11:30 a.m. - 1:10 p.m. M R210

BIOL 2644.020 1:30-2:45 p.m. MW R307  
3-4:40 p.m. W R210

BIOL 2644.H07 Hybrid 8:30-10 a.m. TTh R205  
(01/08-03/01)  
9:30-10:55 a.m. TTh R210  
(01/08-03/01)

Students must also register for BIOL 2654.H07.

**Anatomy & Physiology II\*** 4 cr. hrs.

BIOL 2654.010 8:30-9:45 a.m. MW R212  
10-11:40 a.m. W R210

BIOL 2654.H01 Hybrid 3-4:40 p.m. M R210  
3-4:40 p.m. W R205

BIOL 2654.H07 Hybrid 8:30-10 a.m. TTh R205  
(03/11-05/03)

9:30-10:55 a.m. TTh R210  
(03/11-05/03)

Students must also register for BIOL 2644.H07.

**Microbiology\*** 4 cr. hrs.

BIOL 2714.010 12-1:15 p.m. TTh R205  
3:30-5:20 p.m. T R211  
3:30-4:20 p.m. Th R211

BIOL 2714.020 12-1:15 p.m. TTh R205  
1:30-3:10 p.m. T R211  
1:30-2:20 p.m. Th R211

**Gross Human Anatomy\*** 3 cr. hrs.

BIOL 2803.010 2-5:30 p.m. Th R210

**Business**

**Introduction to Entrepreneurship** 3 cr. hrs.

BSNS 1133.H01 Hybrid

**Personal Finance** 3 cr. hrs.

BSNS 1373.010 9:30-10:45 a.m. TTh L371

**Introduction to Business** 3 cr. hrs.

BSNS 1553.H01 Hybrid (01/08-03/01)

**Legal & Social Env of Business** 3 cr. hrs.

BSNS 1663.H01 Hybrid

**Business Statistics\*** 4 cr. hrs.

BSNS 2514.010 1-2:40 p.m. MW D330

BSNS 2514.030 12:30-2:10 p.m. TTh L366

BSNS 2514.W01 Online

BSNS 2514.W02 Online

**Principles of Management** 3 cr. hrs.

BSNS 2553.H01 Hybrid (03/11-05/03)

**Business Management/Marketing**

**Sales & Customer Service** 3 cr. hrs.

MKTG 1253.H01 Hybrid

**Principles of Marketing** 3 cr. hrs.

MKTG 1553.H01 Hybrid

MKTG 1553.H02 Hybrid

**Fundamentals of Advertising** 3 cr. hrs.

MKTG 2063.H01 Hybrid

**Chemistry**

Attendance at the first laboratory meeting is required for all CHEM courses.

**Introductory Chemistry** 4 cr. hrs.

CHEM 1534.010 12-1:15 p.m. TTh L373  
10-11:40 a.m. T R311

**General Chemistry I** 4 cr. hrs.

CHEM 1614.810 5:30-6:45 p.m. TTh R307  
7-7:50 p.m. T R307  
7-9:30 p.m. Th R311

**General Chemistry II** 4 cr. hrs.

CHEM 1624.010 11-11:50 a.m. MWF R307  
2:45-5:15 p.m. T R311

CHEM 1624.020 11-11:50 a.m. MWF R307  
12-2:30 p.m. W R311

**Organic Chemistry II\*** 4 cr. hrs.

CHEM 2724.010 9-9:50 a.m. MWF R307  
2:30-5:40 p.m. Th R311



Bus service available.

More information:

[www.RiverValleyMetro.com](http://www.RiverValleyMetro.com)

Learn about online and hybrid courses at [bit.ly/KCC-course-delivery](http://bit.ly/KCC-course-delivery)

\*Course has prerequisite or testing requirements. ♦ Course designed to prepare students for college-level coursework.

Visit [www.kcc.edu/schedule](http://www.kcc.edu/schedule) for the current Spring 2024 schedule

## SPRING CREDIT CLASSES

### Coding Specialist

**Pathopharmacology for Health Careers** 3 cr. hrs.  
HLTH 1223.W01 Online

### Communication

**Introductory Speech** 3 cr. hrs.

COMM 1553.010 8-9:15 a.m. MW D212

COMM 1553.020 9:30-10:45 a.m. MW D212  
Emphasis on Health Careers.

COMM 1553.030 8-9:15 a.m. TTh D212  
Health Careers Designated: PTA and RN.

COMM 1553.040 12:30-1:45 p.m. TTh D212

COMM 1553.H01 Hybrid 12:30-1:45 p.m. M D212

COMM 1553.H07 Hybrid 8:30-10:50 a.m. M D213  
(03/11-05/03)

COMM 1553.HF1 Hybrid 6-8:30 p.m. W NEC  
\*\*North Extension Center Course\*\*

COMM 1553.W01 Online

COMM 1553.W02 Online

COMM 1553.W03 Online

COMM 1553.W06 Online (02/05-03/01)

**Interpersonal Communication** 3 cr. hrs.

COMM 1563.010 9:30-10:45 a.m. TTh D212

**Business Communication** 3 cr. hrs.

COMM 1603.010 9:30-10:45 a.m. MW L314

COMM 1603.W01 Online

This section is for career and technical education students only.

### Computer Graphic Technology

**Intro to Web Design** 3 cr. hrs.

COGT 1123.W01 Online

**Package Design** 3 cr. hrs.

COGT 1133.H01 Hybrid 6-9 p.m. M V107

**Photoshop Digital Imaging** 3 cr. hrs.

COGT 1213.H01 Hybrid 10 a.m. - 1 p.m. F V107

**Computer Illustration** 3 cr. hrs.

COGT 1243.H01 Hybrid 6-9 p.m. Th V107

**AutoCAD I** 4 cr. hrs.

COGT 2114.H01 Hybrid 10 a.m. - 3 p.m. W V102

**AutoCAD II** 3 cr. hrs.

COGT 2123.H01 Hybrid 6-9 p.m. T V102

**Infrastructure Design With Civil 3D** 3 cr. hrs.

COGT 2173.H01 Hybrid 6-9 p.m. W V102

**Animation & Rendering with 3ds Max** 3 cr. hrs.

COGT 2443.H01 Hybrid 9 a.m. - 12:30 p.m. Th V102

**Video Editing with Adobe Premiere** 2 cr. hrs.

COGT 2452.W01 Online

**STEM Guitar** 2 cr. hrs.

STEM 1512.810 6-8:30 p.m. Th V111

### Computer Science

**Introduction to Information Processing** 3 cr. hrs.

COSC 1513.010 9-10:50 a.m. TTh D122

COSC 1513.020 1-2:50 p.m. TTh D122

COSC 1513.810 5:30-7:20 p.m. TTh D122

### Criminal Justice/Law Enforcement

**Basic Criminal Law** 3 cr. hrs.

LAWF 1713.010 8-9:15 a.m. TTh V202

LAWF 1713.810 6-8:30 p.m. M V202

**Criminal Investigation** 3 cr. hrs.

LAWF 1733.010 9:30-10:45 a.m. TTh V202

LAWF 1733.810 6-8:30 p.m. T V202

**Juvenile Delinquency** 3 cr. hrs.

LAWF 1753.010 9:30-10:45 a.m. MW V202

LAWF 1753.810 6-8:30 p.m. W V202

**Organization & Administration** 3 cr. hrs.

LAWF 2623.010 11 a.m. - 12:15 p.m. TTh V202

LAWF 2623.810 6-8:30 p.m. Th V202

**Community-Oriented Policing** 3 cr. hrs.

LAWF 2713.010 8-9:15 a.m. MW V202

### Diesel/Auto Mechanic

**Diesel Fundamentals** 3 cr. hrs.

DESL 1003.010 8-9:50 a.m. MWF MITC  
(01/08-02/02) \*\*MITC Course\*\*

**Diesel Brakes** 3 cr. hrs.

DESL 1013.010 8-9:50 a.m. MWF MITC  
(02/05-03/01) \*\*MITC Course\*\*

**Diesel Electrical** 3 cr. hrs.

DESL 1023.010 10-11:50 a.m. MWF MITC  
(02/19-03/22) \*\*MITC Course\*\*

**Get your books in KCC's Hammes bookstore. Online orders available from [books.kcc.edu](http://books.kcc.edu)**

Learn about online and hybrid courses at [bit.ly/KCC-course-delivery](http://bit.ly/KCC-course-delivery)

\*Course has prerequisite or testing requirements. ♦ Course designed to prepare students for college-level coursework.

<b>Diesel Steering and Suspension</b>	3 cr. hrs.
DESL 1033.010 8-9:50 a.m. MWF MITC (03/11-04/05) **MITC Course**	
<b>Diesel Transmissions</b>	3 cr. hrs.
DESL 1043.010 10-11:50 a.m. MWF MITC (03/18-4/12) **MITC Course**	
<b>Diesel Engines and Repairs</b>	3 cr. hrs.
DESL 1053.010 8-9:50 a.m. MWF MITC (04/08-05/03) **MITC Course**	

## Early Childhood Education

<b>Child Growth &amp; Development</b>	3 cr. hrs.
ECED 1513.H01 Hybrid 9:30-10:45 a.m. Th L333	
ECED 1513.W01 Online	
<b>History &amp; Philosophy of Early Child Ed</b>	3 cr. hrs.
ECED 2013.W01 Online	
<b>School Aged Programming</b>	3 cr. hrs.
ECED 2103.H01 Hybrid 5:30-6:45 p.m. M L333	
<b>Science/Math Activities</b>	3 cr. hrs.
ECED 2243.H01 Hybrid 4-5:15 p.m. T L333	
<b>Heads Up Reading</b>	3 cr. hrs.
ECED 2263.W01 Online(01/08-03/01)	
<b>Clinical Experience</b>	3 cr. hrs.
ECED 2403.H01 Hybrid 5:30-6:30 p.m. T L333	
<b>Child, Family &amp; Community Relations</b>	3 cr. hrs.
ECED 2513.H01 Hybrid 4-5:15 p.m. M L333	
<b>Early Childhood Curriculum Development</b>	3 cr. hrs.
ECED 2533.H01 Hybrid 11 a.m. - 12:15 p.m. Th L333	
<b>Child Study &amp; Observation</b>	3 cr. hrs.
ECED 2543.W01 Online	

## Economics

<b>Principles of Economics*</b>	3 cr. hrs.
ECON 1543.010 9-10:20 a.m. MW L371	
ECON 1543.950 9:30-10:50 a.m. TTh NEC **North Extension Center Course**	
<b>Principles of Macroeconomics*</b>	3 cr. hrs.
ECON 1553.W01 Online	
<b>Principles of Microeconomics</b>	3 cr. hrs.
ECON 1563.010 11 a.m. - 12:20 p.m. MW L371	

## Education

<b>Intro to Public Education</b>	3 cr. hrs.
EDUC 1713.H01 Hybrid 11-11:50 a.m. W L335 (01/08-03/01)	
EDUC 1713.W01 Online (03/11-05/03)	
<b>Technology in Education</b>	3 cr. hrs.
EDUC 1763.W01 Online	
<b>The Exceptional Learner/Child*</b>	3 cr. hrs.
EDUC 1833.H01 Hybrid 11-11:50 a.m. W L335	
EDUC 1833.W01 Online	
<b>Educational Psychology*</b>	3 cr. hrs.
EDUC 2613.W01 Online (03/11-05/03)	

## Electrical Technology

<b>Fundamentals of Electricity</b>	4 cr. hrs.
ELTR 1004.010 1-3:30 p.m. TTh V113	
ELTR 1004.810 5:30-10:30 p.m. M V113	
<b>Basic Circuit Analysis</b>	3 cr. hrs.
ELTR 1023.010 9-11 a.m. MW V113	
ELTR 1023.810 5:30-9:30 p.m. T V113	
<b>Pneumatics &amp; Electro-Pneumatics</b>	2 cr. hrs.
ELTR 1082.010 1-3 p.m. TTh V106 (01/08-03/01)	
ELTR 1082.020 1-3 p.m. TTh V106 (03/11-05/03)	
ELTR 1082.810 5:30-9:30 p.m. M V106 (01/08-03/01)	
ELTR 1082.820 5:30-9:30 p.m. M V106 (03/11-05/03)	
<b>Digital Fundamentals</b>	3 cr. hrs.
ELTR 1113.010 1-3:30 p.m. MW V113	
ELTR 1113.810 5:30-10:30 p.m. Th V113	
<b>Natl Electric Code &amp; Wiring Methods*</b>	4 cr. hrs.
ELTR 1174.010 1-3:30 p.m. MW T103	
ELTR 1174.810 5:30-10:30 p.m. T T103	
<b>Electrical Installation Skills I</b>	2 cr. hrs.
ELTR 1302.810 5:30-9:30 p.m. Th T103 (03/11-05/03)	
<b>Industrial Safety</b>	2 cr. hrs.
ELTR 1402.H01 Hybrid 9-10:15 a.m. F M111 (01/22-05/09)	
ELTR 1402.H03 Hybrid 12-1:15 p.m. F M111 (01/22-05/09)	

(Electrical Technology continues on page 9)

Learn about online and hybrid courses at [bit.ly/KCC-course-delivery](https://bit.ly/KCC-course-delivery)

\*Course has prerequisite or testing requirements. ♦ Course designed to prepare students for college-level coursework.

Visit [www.kcc.edu/schedule](https://www.kcc.edu/schedule) for the current Spring 2024 schedule



**Free Tuition  
and paths to  
good-paying jobs**

Local jobs are waiting, and KCC tuition is FREE to qualified students who enroll in manufacturing, welding or electrical engineering technology programs.

**Get started at [skills.kcc.edu](https://skills.kcc.edu)**



**Survey of Renewable Energy**  
 ELTR 1503.010 9-11:50 a.m. M T205 3 cr. hrs.

**DC & AC Rotating Machines\***  
 ELTR 2074.010 2-4:30 p.m. TTh V115 4 cr. hrs.  
 ELTR 2074.810 5:30-10:30 p.m. M V115

**Intro to Solar-Photovoltaic Tech\***  
 ELTR 2334.820 5:30-10:30 p.m. W T123 4 cr. hrs.

**Advanced Photovoltaic Installation**  
 ELTR 2343.010 9 a.m. - 1 p.m. T T123 3 cr. hrs.

**Programmable Controllers\***  
 ELTR 2444.010 9:30 a.m. - 12 p.m. TTh V106 4 cr. hrs.  
 ELTR 2444.810 5:30-10:30 p.m. W V106

**Process Control\***  
 ELTR 2464.810 5:30-10:30 p.m. T V106 4 cr. hrs.

## Engineering

**C++ Programming for STEM Majors** 3 cr. hrs.  
 COSC 2613.H01 Hybrid 1-2:15 p.m. TTh L372  
 (03/11-05/03)

**Dynamics** 3 cr. hrs.  
 ENGR 2523.010 8-9:15 a.m. TTh L314

**Mechanics of Materials** 3 cr. hrs.  
 ENGR 2533.010 9:30-10:45 a.m. TTh L314

**Electrical Circuits & Networks\*** 3 cr. hrs.  
 ENGR 2613.710 1-1:50 p.m. MWF ONU  
 Course offered by Olivet Nazarene University: ENGR-222.01. Reed Hall of Science-Room TBA. Starts Wednesday 01/17/24.

## English

**Accelerated Writing Instruction** 2 cr. hrs.  
 ENGL 1422.H01 Hybrid 11 a.m. - 12:15 p.m. TTh D328  
 (01/08-02/16)  
 Must be registered in ENGL 1613.H01.

ENGL 1422.H02 Hybrid 12:30-1:45 p.m. MW D328  
 Must be registered in ENGL 1613.030.  
 ENGL 1422.W01 Online (01/08-2/16)

**English I\*** 3 cr. hrs.  
 ENGL 1613.010 8-9:15 a.m. MW D330  
 ENGL 1613.020 12:30-1:45 p.m. TTh D328  
 ENGL 1613.810 5:30-6:45 p.m. TTh D326  
 ENGL 1613.9H9 1-3:30 p.m. T SEC  
 (01/08-03/01)  
**\*\*South Extension Center Course\*\***  
 ENGL 1613.H01 Hybrid 11 a.m. - 12:15 p.m. TTh D328  
 (02/19-05/09)  
 Must be registered in ENGL 1422.H01.

ENGL 1613.H02 Hybrid 12:30-1:45 p.m. MW D328  
 (02/19-05/09)  
 Must be registered in ENGL 1422.H02.

ENGL 1613.H03 Hybrid 9:30-10:45 a.m. MW D326  
 (01/08-03/01)

ENGL 1613.H04 Hybrid 3:15-4:30 p.m. Th D327

ENGL 1613.H07 Hybrid 8:30-10:50 a.m. M D213  
 (01/08-03/01)

ENGL 1613.H41 Hybrid 1-3:30 p.m. T SEC  
 (01/08-03/01)  
**\*\*South Extension Center Course\*\***

ENGL 1613.W01 Online (02/19-05/09)

ENGL 1613.W02 Online

ENGL 1613.W06 Online (01/08-02/02)

**English II\*** 3 cr. hrs.

ENGL 1623.020 11 a.m. - 12:15 p.m. MW D330

ENGL 1623.030 12:30-1:45 p.m. TTh D326

ENGL 1623.050 9:30-10:45 a.m. TTh D326

ENGL 1623.070 11 a.m. - 12:15 p.m. TTh D330

ENGL 1623.080 9:30-10:45 a.m. TTh D328  
 (01/22-05/09)

ENGL 1623.H01 Hybrid 9:30-10:45 a.m. MW D330  
 (03/11-05/03)

ENGL 1623.H02 Hybrid 12:30-1:45 p.m. Th D326

ENGL 1623.H03 Hybrid 5:30-6:45 p.m. MW D330  
 (01/08-03/01)

ENGL 1623.H04 Hybrid 11 a.m. - 12:15 p.m. T L372

ENGL 1623.H41 Hybrid 1-3:30 p.m. T SEC  
 (03/11-05/03)

**\*\*South Extension Center Course\*\***  
 ENGL 1623.H51 Hybrid 6-8:30 p.m. T NEC  
**\*\*North Extension Center Course\*\***

ENGL 1623.W01 Online (01/08-03/01)

ENGL 1623.W02 Online (03/11-05/03)

ENGL 1623.W03 Online

ENGL 1623.W06 Online (02/05-03/01)

**Introduction to Film Study\*** 3 cr. hrs.

ENGL 1723.H01 Hybrid 12:30-1:45 p.m. T D140

ENGL 1723.H41 Hybrid 1-3:30 p.m. Th SEC  
 (01/08-03/01)

**\*\*South Extension Center Course\*\***

**Children's Literature\*** 3 cr. hrs.

ENGL 2553.W01 Online

**American Literature From 1865\*** 3 cr. hrs.

ENGL 2733.H01 Hybrid 9:30-10:45 a.m. T D330

**Introduction to Journalism\*** 3 cr. hrs.

JOUR 1653.010 8-9:15 a.m. MW D328

Learn about online and hybrid courses at [bit.ly/KCC-course-delivery](http://bit.ly/KCC-course-delivery)

\*Course has prerequisite or testing requirements. ♦ Course designed to prepare students for college-level coursework.

Visit [www.kcc.edu/schedule](http://www.kcc.edu/schedule) for the current Spring 2024 schedule

**SPRING CREDIT CLASSES**

**Foreign Language**

<b>Basic Spanish</b>				3 cr. hrs.
SPAN 1503.010	9:30-10:45 a.m.	TTh	L306	
<b>Elementary Spanish II*</b>				4 cr. hrs.
SPAN 1524.010	11 a.m. - 12:15 p.m.	MW	L306	

**Geography**

<b>World Regional Geography*</b>				3 cr. hrs.
GEOG 1513.W01	Online			

**Health**

<b>Medical Terminology*</b>				2 cr. hrs.
HLTH 1312.W01	Online (01/08-03/01)			
HLTH 1312.W02	Online (03/11-05/03)			
<b>Nutrition*</b>				3 cr. hrs.
HLTH 1513.W01	Online			
HLTH 1513.W02	Online			

**History**

<b>Western Civilization to 1648*</b>				3 cr. hrs.
HIST 1513.W01	Online			
<b>Western Civilization 1648 to Present*</b>				3 cr. hrs.
HIST 1533.W01	Online			
<b>Modern World History</b>				3 cr. hrs.
HIST 1723.010	9:30-10:45 a.m.	MW	L315	
<b>African American History*</b>				3 cr. hrs.
HIST 1823.010	12:30-1:45 p.m.	MW	L313	
<b>History of the U.S. to 1877*</b>				3 cr. hrs.
HIST 2513.W01	Online (01/08-03/01)			
<b>History of the U.S. 1877 to Present*</b>				3 cr. hrs.
HIST 2523.010	11 a.m. - 12:15 p.m.	TTh	L315	
HIST 2523.W01	Online (03/11-05/03)			

**Humanities**

<b>Introduction to Humanities*</b>				3 cr. hrs.
HUMS 1513.010	11 a.m. - 12:15 p.m.	MW	L369	
HUMS 1513.H01	Hybrid 9:30-10:45 a.m. (01/08-03/01)	TTh	L369	
HUMS 1513.W01	Online			
HUMS 1513.W06	Online (04/08-05/03)			

<b>Intro to Women's &amp; Gender Studies</b>				3 cr. hrs.
HUMS 1553.010	9:30-10:45 a.m.	MW	L312	
<b>Hispanic-Latino Culture*</b>				3 cr. hrs.
HUMS 1833.010	12:30-1:45 p.m. (01/08-03/01)	MW	L306	
<b>World Religions*</b>				3 cr. hrs.
HUMS 2613.010	9:30-10:45 a.m.	TTh	R305	
HUMS 2613.W01	Online			

**Information Technology**

<b>Web Development - HTML5 &amp; CSS</b>				3 cr. hrs.
ITSM 1113.W01	Online			
<b>Web Principles &amp; User Experience</b>				3 cr. hrs.
ITSM 1143.W01	Online (1/8-3/1)			
<b>Mobile Application Fundamental</b>				3 cr. hrs.
ITSM 1153.W01	Online (3/11-5/3)			
<b>IT Systems and Hardware</b>				3 cr. hrs.
ITSM 1213.810	6-9 p.m. (1/9-3/1)	TTh	T123	
<b>IT Systems and Management</b>				3 cr. hrs.
ITSM 1223.810	6-9 p.m. (3/12-5/3)	TTh	T123	
<b>Networking Technologies</b>				3 cr. hrs.
ITSM 1243.H01	6-9 p.m. (1/8-3/1)	MW	D122	
<b>Cyber Security Fundamentals</b>				3 cr. hrs.
ITSM 1253.H01	6-8 p.m.	TTh	T125	
<b>Programming Logic</b>				3 cr. hrs.
ITSM 1303.810	6-7:50 p.m.	MW	T125	
<b>Java</b>				3 cr. hrs.
ITSM 1313.810	6-7:50 p.m.	TTh	W110	
<b>Modern Operating Systems</b>				3 cr. hrs.
ITSM 1423.810	6-8 p.m. (1/8 May 9 ??????)	MW	W110	

<b>Web Development - JavaScript</b>				3 cr. hrs.
ITSM 2113.W01	Online			

Learn about online and hybrid courses at [bit.ly/KCC-course-delivery](https://bit.ly/KCC-course-delivery)

\*Course has prerequisite or testing requirements. ♦ Course designed to prepare students for college-level coursework.

## Machine Tool

<b>Machine Tool I*</b>	4 cr. hrs.
MCHN 1214.961 5:30-10:30 p.m. **MITC Course**	W MITC
<b>Machine Tool II*</b>	4 cr. hrs.
MCHN 1224.961 5:30-10:30 p.m. **MITC Course**	T MITC
<b>Machine Tool III*</b>	4 cr. hrs.
MCHN 1234.810 5:30-10:30 p.m. **MITC Course**	M MITC
<b>Precision Measurement</b>	1 cr. hrs.
MCHN 1311.962 6-8:15 p.m. (01/08-02/16)	T
MCHN 1311.963 6-8:15 p.m.	Th
<b>Fabrication</b>	3 cr. hrs.
MCHN 1323.960 5:30-9:20 p.m. **MITC Course**	W MITC
<b>Rigging</b>	2 cr. hrs.
MCHN 1442.960 8:15-10:30 p.m. (01/08-03/01) **MITC Course**	Th MITC
<b>Lubrication</b>	2 cr. hrs.
MCHN 1452.960 6-10:30 p.m. (04/08-05/03) **MITC Course**	Th MITC
<b>Fund of CNC Machining &amp; Programming*</b>	4 cr. hrs.
MCHN 2314.961 5:30-10:30 p.m. **MITC Course**	T MITC

## Manufacturing Technology

<b>Intro to Manufacturing and Safety</b>	2 cr. hrs.
MAFT 1112.020 11 a.m. - 12:40 p.m. (01/08-03/01)	TTh L369
<b>Quality and Measurement</b>	2 cr. hrs.
MAFT 1222.010 1-2:40 p.m.	TTh L377
<b>Manufacturing Processes</b>	2 cr. hrs.
MAFT 1232.010 1-2:40 p.m. (03/11-05/03)	TTh L377
<b>Intro to Manufacturing Maintenance</b>	2 cr. hrs.
MAFT 1312.010 11 a.m. - 12:40 p.m.	TTh L377
<b>Lean and Quality Overview</b>	3 cr. hrs.
MAFT 1323.W01 Online	
<b>Certified Logistics Technician*</b>	3 cr. hrs.
TWDL 1223.810 5:30-8:50 p.m.	MW D213

## Mathematics

<b>◆Fundamentals of Mathematics*</b>	4 cr. hrs.
MATH 0974.010 11 a.m. - 12:40 p.m.	MW D327
<b>◆Prep for Math Literacy</b>	1 cr. hrs.
MATH 0981.010 8:30-8:55 a.m.	MW D327
Students must also register for MATH 0985.010.	
<b>◆Math Literacy</b>	5 cr. hrs.
MATH 0985.010 9-10:25 a.m.	MWF D327
MATH 0985.020 1-2:25 p.m.	TWTh D327
<b>◆Preparation for Statistics</b>	1 cr. hrs.
MATH 0991.W01 Online	
Must also be registered in MATH 1774.010.	
<b>Technical Mathematics</b>	3 cr. hrs.
MATH 1103.010 3:45-5 p.m.	MW L373
MATH 1103.H01 Hybrid 3:45-5 p.m. (01/22-05/09)	T D327
MATH 1103.W01 Online	
<b>Technical Math for Electrical Circuitry</b>	3 cr. hrs.
MATH 1133.010 3:45-5 p.m.	TTh R307
<b>Introduction to Dosage Calculations*</b>	1 cr. hrs.
MATH 1141.H01 Hybrid 11-11:50 a.m. (01/08-03/01)	Th R205
<b>Intro to Respiratory Calculations</b>	2 cr. hrs.
MATH 1142.H01 Hybrid 1-2:40 p.m.	Th R305
<b>Business Mathematics*</b>	3 cr. hrs.
MATH 1213.810 5:30-6:45 p.m.	TTh L314
<b>Basic Algebra*</b>	4 cr. hrs.
MATH 1414.010 1-3 p.m. (01/22-05/09)	MW R306
MATH 1414.810 5:30-7:10 p.m.	TTh L312
<b>Intermediate Algebra*</b>	4 cr. hrs.
MATH 1424.010 9-10:40 a.m.	TTh L373
MATH 1424.810 5:30-7:20 p.m.	MW L344
<b>Math for Elementary Teachers II*</b>	3 cr. hrs.
MATH 1623.010 1-2:15 p.m.	TTh L347
<b>Contemporary Mathematics*</b>	4 cr. hrs.
MATH 1704.010 2-3:40 p.m.	TTh L312
<b>Statistics*</b>	4 cr. hrs.
MATH 1774.010 1-2:40 p.m.	MW D330
MATH 1774.030 12:30-2:10 p.m.	TTh L366
MATH 1774.W01 Online	
MATH 1774.W02 Online	

(Mathematics continued on page 12)

Learn about online and hybrid courses at [bit.ly/KCC-course-delivery](http://bit.ly/KCC-course-delivery)

\*Course has prerequisite or testing requirements. ◆ Course designed to prepare students for college-level coursework.

Visit [www.kcc.edu/schedule](http://www.kcc.edu/schedule) for the current Spring 2024 schedule

# Get the flexibility you need!

## Check out Online & Hybrid Options

Hybrid courses include content online as well as in a classroom or other prescribed location.

**Please note:** success depends on self-discipline and the ability to learn without face-to-face interaction (online courses) and with limited face-to-face interaction (hybrid courses). KCC's online and hybrid courses maintain the high standards of classroom courses. Academic progress is established and maintained with your faculty member and classmates in writing. Strong reading and writing skills in the English language are critical.

Visit [www.kcc.edu](http://www.kcc.edu) for answers to your questions about online and hybrid courses.



Learn about online and hybrid courses at [bit.ly/KCC-course-delivery](https://bit.ly/KCC-course-delivery)

\*Course has prerequisite or testing requirements. ♦ Course designed to prepare students for college-level coursework.

Visit [www.kcc.edu/schedule](http://www.kcc.edu/schedule) for the current Spring 2024 schedule

**Trigonometry\*** 3 cr. hrs.

MATH 1803.010 12:30-1:45 p.m. MW L369

**College Algebra\*** 4 cr. hrs.

MATH 1814.010 2-3:40 p.m. MW M120

**Calculus for Business & Social Science** 4 cr. hrs.

MATH 1834.010 11 a.m. - 12:10 p.m. TWTh R306

**Discrete Math** 3 cr. hrs.

MATH 1843.H01 Hybrid 1-2:15 p.m. TTh L369  
(01/08-03/01)

**Calculus & Analytic Geometry I\*** 5 cr. hrs.

MATH 2515.010 10-10:50 a.m. M-F R306

**Calculus & Analytic Geometry II\*** 4 cr. hrs.

MATH 2524.010 12-12:50 p.m. MWThF R305

**Differential Equations\*** 3 cr. hrs.

MATH 2613.010 8-8:50 a.m. MWF R305

**Medical Laboratory Assistant**

**Medical Lab Assistant Skills** 4 cr. hrs.

MEDT 1044.H01 Hybrid 5-8:20 p.m. T M139  
Labs: TBD

**Medical Laboratory Technology**

**Hematology & Coagulation\*** 4 cr. hrs.

MEDT 1124.H01 Hybrid 8 a.m. - 12:30 p.m. Th M139  
Labs: 1/11, 1/25, 2/1, 2/15, 2/29, 3/14, 3/28, 4/11.

**Blood Bank** 4 cr. hrs.

MEDT 1224.H01 Hybrid 1-5:30 p.m. Th M139  
Labs: 1/11, 1/25, 2/1, 2/15, 2/29, 3/14, 3/28, 4/11.

**Clinical Practicum I\*** 6 cr. hrs.

MEDT 2316.010 (01/08-03/01) MTWTh

**Clinical Practicum II\*** 6 cr. hrs.

MEDT 2326.010 (03/11-05/03) MTWTh

**Medical Laboratory Technology Seminar\*** 2 cr. hrs.

MEDT 2462.W01 Online

**Nursing Assistant**

**Nursing Assistant\*** 8 cr. hrs.

PNUR 1438.010 8 a.m. - 1:30 p.m. M M112  
(01/08-02/05)  
8 a.m. - 1:30 p.m. W M112  
7 a.m. - 2:30 p.m. MTThF LTC  
(02/12-05/03)

**Nursing-Practical**

**Practical Nursing II\*** 10 cr. hrs.

PNUR 1140.010 1-3:30 p.m. TTh M117  
7 a.m. - 3:30 p.m. MWF LTC

**Practical Nursing Pharmacology II\*** 2 cr. hrs.

PNUR 1262.010 10 a.m. - 12 p.m. Th T127

**Nursing-Registered**

**Introduction to Nursing\*** 6 cr. hrs.

RNUR 1106.010 8 a.m. - 12:30 p.m. M M117  
(01/08-02/12)  
8-11:30 a.m. T M117  
7 a.m. - 12:30 p.m. MWFSat LTC  
(02/19-05/03)

**Nursing--Adult & Child I** 8 cr. hrs.

RNUR 1128.010 10 a.m. - 12 p.m. TTh M120  
6:30 a.m. - 2 p.m. WF HSP

**Introduction to Pharmacology\*** 2 cr. hrs.

RNUR 1152.010 8-10 a.m. Th M120

**Nursing Seminar II\*** 1 cr. hrs.

RNUR 1461.H01 Hybrid 1-1:50 p.m. T M112  
RNUR 1461.H02 Hybrid 2-2:50 p.m. T M112

**Nursing--Adult & Child III** 2 cr. hrs.

RNUR 2122.H01 Hybrid 8:30-10 a.m. M M120  
7 a.m. - 12:30 p.m. HSP

**Nursing--Adult & Child II** 8 cr. hrs.

RNUR 2228.010 12:30-2:30 p.m. TTh M120  
6:30 a.m. - 2 p.m. MWF HSP

**Nursing--Adult & Child IV** 7 cr. hrs.

RNUR 2237.010 8:30 a.m. - 12 p.m. Th M117  
6:30 a.m. - 2 p.m. WF HSP

**Concepts of Clinical Pharmacology\*** 3 cr. hrs.

RNUR 2443.010 10:30 a.m. - 1 p.m. M M120

**Nursing Seminar IV\*** 1 cr. hrs.

RNUR 2461.H01 Hybrid 11 a.m. - 12 p.m. M M111  
(01/29-04/01)  
Class will meet in person at KCC on 1/29 only.  
RNUR 2461.H02 Hybrid 12-1 p.m. M M111  
Class will meet in person at KCC on 1/29 only.  
(01/29-04/01)

**Office Professional**

**Successful Customer Service** 1 cr. hrs.

BSNS 2311.810 7-8:40 p.m. Th L371  
(03/11-05/03)

Learn about online and hybrid courses at [bit.ly/KCC-course-delivery](http://bit.ly/KCC-course-delivery)

\*Course has prerequisite or testing requirements. ♦ Course designed to prepare students for college-level coursework.

Visit [www.kcc.edu/schedule](http://www.kcc.edu/schedule) for the current Spring 2024 schedule

## SPRING CREDIT CLASSES

---

### Paramedic

**Emergency Medical Technician--Basic** 8 cr. hrs.

PMED 1018.H01 Hybrid 9 a.m. - 12 p.m. MW W101

**Paramedic II\*** 15 cr. hrs.

PMED 2215.H01 Hybrid 9 a.m. - 2:30 p.m. TTh W101

### Philosophy

**Introduction to Philosophy\*** 3 cr. hrs.

PHIL 2513.010 11 a.m. - 12:15 p.m. MW R212

**Ethics\*** 3 cr. hrs.

PHIL 2523.010 9:30-10:45 a.m. MW L344

**Logic\*** 3 cr. hrs.

PHIL 2533.010 11 a.m. - 12:15 p.m. TTh L344

### Phlebotomy

**Phlebotomy Techniques** 4 cr. hrs.

HLTH 1404.010 8 a.m. - 12:20 p.m. MW M139  
(01/08-03/01)

Also register for HLTH 1412 after 3/11/2024

HLTH 1404.810 5:30-7:50 p.m. MW M139

**Phlebotomy CBE** 6 cr. hrs.

HLTH 1416.H01 Hybrid

HLTH 1416.H02 Hybrid

HLTH 1416.H03 Hybrid

HLTH 1416.H04 Hybrid

HLTH 1416.H05 Hybrid

## Finish a bachelor's degree online!

KCC has partnered with several universities so you can finish your degree online.

For more information, go to [www.kcc.edu/transfer](http://www.kcc.edu/transfer)

Learn about online and hybrid courses at [bit.ly/KCC-course-delivery](http://bit.ly/KCC-course-delivery)

\*Course has prerequisite or testing requirements. ♦ Course designed to prepare students for college-level coursework.

## Physical Fitness/Education

### Personal Fitness

**PHEC 1611.010** 1 cr. hrs.  
This course can be taken under the pass/fail option. Register any time throughout the semester.

Students enrolling in Personal Fitness (PHEC 1611) for the first time must contact the Fitness Center at 815-802-8610 to make an appointment for an orientation. Spring orientations begins Jan. 2, and must be complete before using the Fitness Center. All participants must begin Fitness Center sessions within 10 days after registering.

### Low Impact Aerobics

**PHEC 1711.010** 10-10:50 a.m. MW G107 1 cr. hrs.

### Kickboxing Plus

**PHEC 1731.010** 10-10:50 a.m. TTh G107 1 cr. hrs.

### Health Education

**PHED 1512.W01** Online 2 cr. hrs.

### Intro to Exercise Science

**PHED 1513.H01** Hybrid 11 a.m. - 12:15 p.m. TTh D213 3 cr. hrs.

### Intro to Sport & Exer Psych

**PHED 1613.W01** Online 3 cr. hrs.

### First Aid/Emergency Care

**PHED 1942.010** 9-10:50 a.m. MW D214 2 cr. hrs.

### Physical Activities-Men

**PHEM 2521.010** Online registration not available for this section. 1 cr. hrs.

**PHEM 2521.020** Online registration not available for this section.

### Physical Activities-Women

**PHEW 2521.010** Online registration not available for this section. 1 cr. hrs.

**PHEW 2521.020** Online registration not available for this section.

**PHEW 2521.030** Online registration not available for this section.

## Physical Therapist Assistant

### PTA Fundamentals II

**PHTA 1133.010** 8-8:50 a.m. M W109 3 cr. hrs.  
8-11:45 a.m. T W109

### Kinesiology II

**PHTA 1203.010** 11 a.m. - 12:50 p.m. M W109 3 cr. hrs.  
10 a.m.-11:45 a.m. Th W108

### Manual Therapy for the PTA

**PHTA 1243.010** 8 a.m.-8:50 a.m. W W108 3 cr. hrs.  
9 a.m. - 12:45 p.m. W W108

### Pathology II for the PTA

**PHTA 1272.H01** Hybrid 9:30-10:20 a.m. M W109 2 cr. hrs.

### Current Issues in PT Practice\*

**PHTA 2201.010** 12:30-3:30 p.m. T W108 1 cr. hrs.  
Class will meet on 1/9, 1/16, 3/12, 3/19, 5/7

### PTA Clinical Practicum II\*

**PHTA 2224.010** (01/22-03/01/24) 4 cr. hrs.

### PTA Clinical Practicum III\*

**PHTA 2234.010** (03/25-05/09/24) 4 cr. hrs.

### PTA Fundamentals V\*

**PHTA 2293.010** 1:30-4:30 p.m. WTh W109 3 cr. hrs.  
(01/08-03/22)  
8-11:30 a.m. WTh W109  
(01/10-01/19)  
12-3:30 p.m. WTh W109  
(03/13-03/22)

## Physics

Attendance at the first laboratory meeting is required for all PHYS courses.

### Physics I\*

**PHYS 2614.010** 1-2:15 p.m. MW R305 4 cr. hrs.  
2:30-4:55 p.m. M R318

### Physics III\*

**PHYS 2634.010** 10-11:15 a.m. MW R305 4 cr. hrs.  
11 a.m. - 12:40 p.m. T R318

## Physical Science

Attendance at the first laboratory meeting is required for all PSCI courses.

### Applied Technical Science

**PSCI 1114.810** 3:45-5 p.m. MW R307 4 cr. hrs.  
5:10-6:50 p.m. M R318  
**PSCI 1114.820** 3:45-5 p.m. MW R307  
5:10-6:50 p.m. W R318

### Introduction to Astronomy

**PSCI 1503.W01** Online 3 cr. hrs.  
**PSCI 1503.W41** Online (03/11-05/03)

### Earth Science & Astronomy\*

**PSCI 1524.010** 12:30-1:45 p.m. TTh R307 4 cr. hrs.  
2-3:40 p.m. T R318  
**PSCI 1524.020** 12:30-1:45 p.m. TTh R307  
10:30 a.m. - 12:10 p.m. Th R318

## Political Science

### American Government\*

**PLSC 1513.010** 12:30-1:45 p.m. TTh L315 3 cr. hrs.  
**PLSC 1513.W01** Online (02/05-05/09)  
**PLSC 1513.W06** Online (03/11-04/05)

Learn about online and hybrid courses at [bit.ly/KCC-course-delivery](https://bit.ly/KCC-course-delivery)

\*Course has prerequisite or testing requirements. ♦ Course designed to prepare students for college-level coursework.

Visit [www.kcc.edu/schedule](https://www.kcc.edu/schedule) for the current Spring 2024 schedule

## SPRING CREDIT CLASSES

### Psychology

#### Introduction to Psychology\*

 3 cr. hrs.

PSYC 1813.010	9:30-10:45 a.m.	MW	L321
PSYC 1813.020	12:30-1:45 p.m.	TTh	L321
PSYC 1813.810	5:30-6:45 p.m.	MW	L312
PSYC 1813.9H6	12:30-1:45 p.m.	T	D213
	**Health Careers: Radiography Designated**		
PSYC 1813.H01	Hybrid 10-11:15 a.m.	M	L373
	**Health Careers: Radiography Designated**		
PSYC 1813.H07	Hybrid 8:30-11 a.m.	W	D213
	(01/08-03/01)		
PSYC 1813.W01	Online		
PSYC 1813.W02	Online		
PSYC 1813.W03	Online (03/11-05/03)		

#### Abnormal Psychology\*

 3 cr. hrs.

PSYC 2513.W01	Online		
---------------	--------	--	--

#### Lifespan Developmental Psychology\*

 3 cr. hrs.

PSYC 2553.010	11 a.m. - 12:15 p.m.	MW	L321
PSYC 2553.020	9:30-10:45 a.m.	TTh	L321
PSYC 2553.H01	Hybrid 12:30-1:45 p.m.	Th	D213
	**Health Careers: RN Designated**		
PSYC 2553.H07	Hybrid 8:30-11 a.m.	W	D213
	(03/11-05/03)		
PSYC 2553.W01	Online		
PSYC 2553.W02	Online (03/11-05/03)		
PSYC 2553.W06	Online (03/11-04/05)		

#### Adulthood and Aging\*

 3 cr. hrs.

PSYC 2573.W01	Online		
---------------	--------	--	--

#### Social Psychology\*

 3 cr. hrs.

PSYC 2773.010	11 a.m. - 12:15 p.m.	TTh	L321
---------------	----------------------	-----	------

### Radiography

#### Radiographic Quality\*

 2 cr. hrs.

XRAY 1042.H01	Hybrid 12:40-2:20 p.m.	M	M122
---------------	------------------------	---	------

#### Radiographic Anatomy & Positioning II\*

 3 cr. hrs.

XRAY 1053.H01	Hybrid 9-10:30 a.m.	M	M122
	9-10:40 a.m.	W	M122
XRAY 1053.H02	Hybrid 9-10:30 a.m.	M	M122
	11:30 a.m. - 1:10 p.m.	W	M122

#### Radiographic Image Analysis II

 2 cr. hrs.

XRAY 1232.H01	Hybrid 10:30 a.m. - 12:10 p.m.	M	M122
---------------	--------------------------------	---	------

#### Clinical II\*

 6 cr. hrs.

XRAY 1326.710	7 a.m. - 3:30 p.m.	TTh	HSP
	1:30-10 p.m.	TTh	HSP

(Radiography continues on page 16)

#### Clinical V\*

 6 cr. hrs.

XRAY 1356.710		MWF	HSP
---------------	--	-----	-----

#### Advanced Radiologic Technology II\*

 5 cr. hrs.

XRAY 2125.H01	Hybrid 9-11:05 a.m.	TTh	M122
---------------	---------------------	-----	------

### Respiratory Therapist

#### Respiratory Physiology\*

 3 cr. hrs.

RESP 1113.010	11 a.m. - 12:30 p.m.	MW	M129
---------------	----------------------	----	------

#### Respiratory Procedures I\*

 4 cr. hrs.

RESP 1324.010	8:30-10:20 a.m.	MW	M130
---------------	-----------------	----	------

#### Respiratory Skills I\*

 1 cr. hrs.

RESP 1331.010	2:30-4:10 p.m.	W	M128
---------------	----------------	---	------

#### Clinical Medicine\*

 3 cr. hrs.

RESP 2213.010	11 a.m. - 12:30 p.m.	M	M130
	11 a.m. - 12:30 p.m.	W	M130

#### Clinical II\*

 5 cr. hrs.

RESP 2225.010	6 a.m. - 12:30 p.m.	TTh	SMH
	12-6:30 p.m.	TTh	RMC

#### Professional Skills\*

 1 cr. hrs.

RESP 2411.010	12:40-1:30 p.m.	M	M130
---------------	-----------------	---	------

#### Respiratory Procedures V\*

 5 cr. hrs.

RESP 2445.010	8:45-10:45 a.m.	MW	M129
	2-4 p.m.	M	M128

### Student Success

#### Foundations for Student Success

 1 cr. hrs.

ORIN 1541.010	8-8:50 a.m.	MW	L150
	(01/08-03/01)		

For Adult Basic Education (ABE) students only; See advisor.

ORIN 1541.020	11-11:50 a.m.	MW	L150
---------------	---------------	----	------

For AGS (L03) degree seeking students only; See advisor.

ORIN 1541.030	8-8:50 a.m.	TTh	L150
---------------	-------------	-----	------

For AS (B70) degree seeking students only; See advisor.

ORIN 1541.040	11-11:50 a.m.	TTh	L150
	(03/11-05/03)		

For Adult Education ESL students only; See advisor.

### Social Work

#### Introduction to Social Work\*

 3 cr. hrs.

SOCW 2523.010			
---------------	--	--	--

Learn about online and hybrid courses at [bit.ly/KCC-course-delivery](https://bit.ly/KCC-course-delivery)

\*Course has prerequisite or testing requirements. ♦ Course designed to prepare students for college-level coursework.

Visit [www.kcc.edu/schedule](https://www.kcc.edu/schedule) for the current Spring 2024 schedule



## Sociology

### Diversity, Equity, Inclusion & Belonging 3 cr. hrs.

SOCY 1613.H41 Hybrid 1-3:30 p.m. W WSE02  
(03/11-05/03)  
**\*\*South Extension Center Course\*\***

### Sociology\* 3 cr. hrs.

SOCY 2513.010 11 a.m. - 12:15 p.m. MW D212  
SOCY 2513.H01 Hybrid 9:30-10:45 a.m. T L344  
SOCY 2513.H02 Hybrid 11 a.m. - 12:15 p.m. TTh L312  
(03/11-05/03)  
SOCY 2513.W01 Online

### Racial and Ethnic Relations\* 3 cr. hrs.

SOCY 2543.W01 Online

### Sociology of the Family\* 3 cr. hrs.

SOCY 2553.H01 Hybrid 9:30-10:45 a.m. Th L344

## Transportation-TWDL

### Introto Supply Chain Management 3 cr. hrs.

TWDL 1103.W01 Online

### Principles of Operations Management 3 cr. hrs.

TWDL 1303.W01 Online

## Welding Technology

### Basic Welding 4 cr. hrs.

WELD 1114.960 8 a.m. - 1 p.m. M MITC  
**\*\*MITC Course\*\***

WELD 1114.961 5:30-10:30 p.m. M MITC  
**\*\*MITC Course\*\***

### Advanced Arc Welding\* 4 cr. hrs.

WELD 1124.961 5:30-10:30 p.m. M MITC  
**\*\*MITC Course\*\***

### Metallurgy & Heat Treatment 3 cr. hrs.

WELD 1263.961 5:30-8:10 p.m. Th MITC  
**\*\*MITC Course\*\***

WELD 1263.962 5:30-8:10 p.m. W MITC  
**\*\*MITC Course\*\***

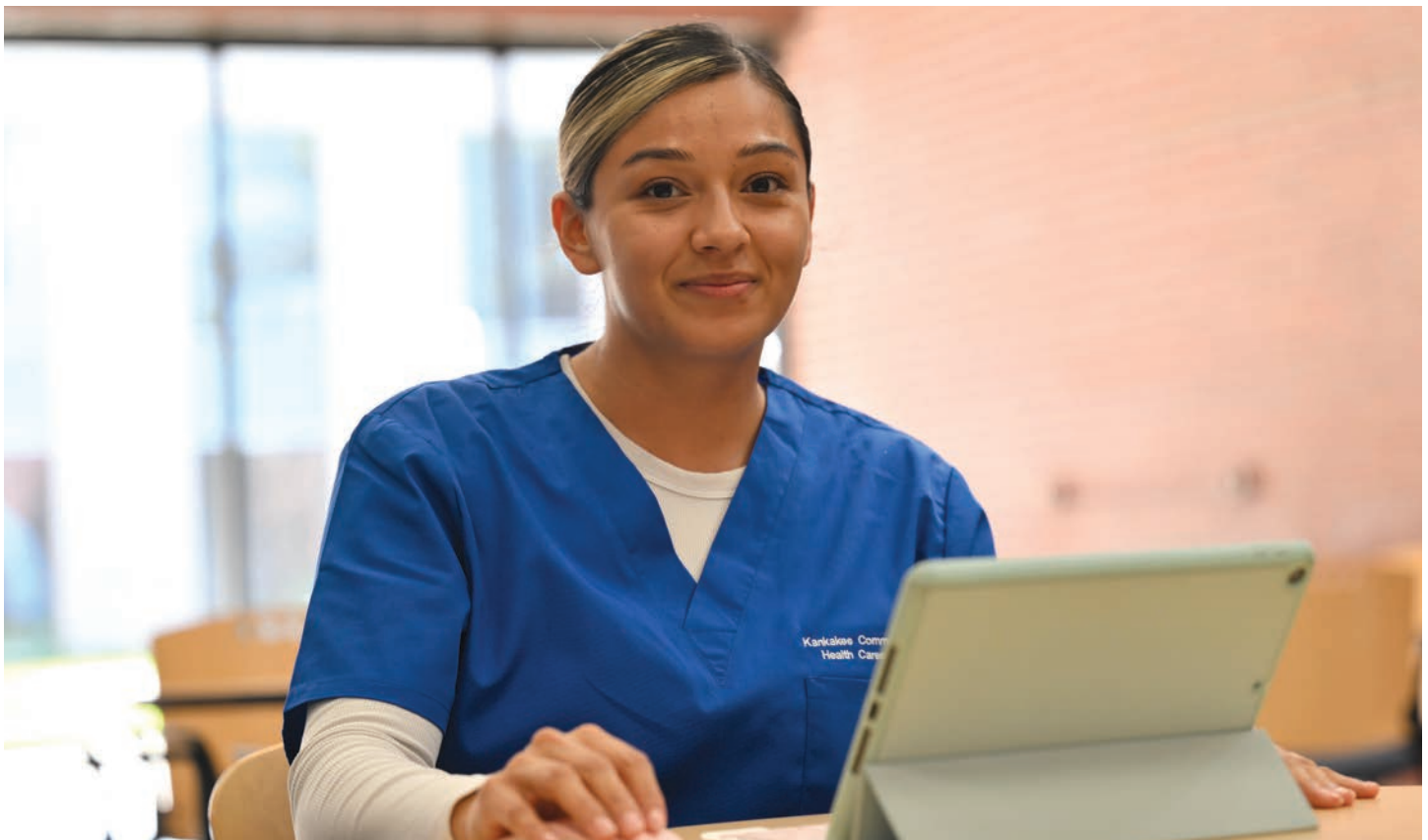
### Pipe Welding\* 4 cr. hrs.

WELD 2044.961 5:30-10:30 p.m. Th MITC  
**\*\*MITC Course\*\***

### Metallic Inert Gas Welding 4 cr. hrs.

WELD 2224.960 8 a.m. - 1 p.m. T MITC  
**\*\*MITC Course\*\***

WELD 2224.961 5:30-10:30 p.m. T MITC  
**\*\*MITC Course\*\***



# Classes Starting After March 1

\*Check [kcc.edu/schedule](http://kcc.edu/schedule) for exact dates\*

## Air Condition & Refrigeration

**Domestic Refrigeration\*** 4 cr. hrs.  
AIRC 1114.961 5:30-10:30 p.m. TTh MITC  
(03/11-05/03) \*\*MITC Course\*\*

## Art

**Survey of Art-Renaissance to Rococo\*** 3 cr. hrs.  
ARTS 1623.W01 Online

## Automotive Technology

**Automatic Transmissions** 3 cr. hrs.  
AUTO 1223.010 12-4 p.m. MW V110/V122

**Computerized Engine Controls I\*** 3 cr. hrs.  
AUTO 2013.820 5:30-10:30 p.m. TTh V110/V122

**Service Shop Operations II\*** 2 cr. hrs.  
AUTO 2252.810 2-3:40 p.m. TTh V110/V122

## Biology

**Anatomy & Physiology II\*** 4 cr. hrs.  
BIOL 2654.H07 Hybrid 8:30-10 a.m. TTh R205  
9:30-10:55 a.m. TTh R210  
Students must also register for BIOL 2644 H07.

## Business

**Principles of Management** 3 cr. hrs.  
BSNS 2553.H01 Hybrid

## Communication

**Introductory Speech** 3 cr. hrs.  
COMM 1553.H07 Hybrid 8:30-10:50 a.m. M D213

## Diesel/Auto Mechanic

**Diesel Steering and Suspension** 3 cr. hrs.  
DESL 1033.010 8-9:50 a.m. MWF MITC  
(03/11-04/05) \*\*MITC Course\*\*

**Diesel Transmissions** 3 cr. hrs.  
DESL 1043.010 10-11:50 a.m. MWF MITC  
(03/18-04/12) \*\*MITC Course\*\*

**Diesel Engines and Repairs** 3 cr. hrs.  
DESL 1053.010 8-9:50 a.m. MWF MITC  
(04/08-05/03) \*\*MITC Course\*\*

## Education

**Intro to Public Education** 3 cr. hrs.  
EDUC 1713.W01 Online  
(03/11-05/03)

**Technology in Education** 3 cr. hrs.  
EDUC 1763.W01 Online

**The Exceptional Learner/Child\*** 3 cr. hrs.  
EDUC 1833.H01 Hybrid 11-11:50 a.m. W L335

**Educational Psychology\*** 3 cr. hrs.  
EDUC 2613.W01 Online

## Electrical Technology

**Pneumatics & Electro-Pneumatics** 2 cr. hrs.  
ELTR 1082.020 1-3 p.m. TTh V106  
ELTR 1082.820 5:30-9:30 p.m. M V106

**Electrical Installation Skills I** 2 cr. hrs.  
ELTR 1302.810 5:30-9:30 p.m. Th T103

## Engineering

**C++ Programming for STEM Majors** 3 cr. hrs.  
COSC 2613.H01 Hybrid 1-2:15 p.m. TTh L372

## English

**English II\*** 3 cr. hrs.  
ENGL 1623.H01 Hybrid 9:30-10:45 a.m. MW D330  
ENGL 1623.H41 Hybrid 1-3:30 p.m. T SEC  
\*\*South Extension Center Course\*\*  
ENGL 1623.W02 Online

## Health

**Medical Terminology\*** 2 cr. hrs.  
HLTH 1312.W02 Online (03/11-05/03)

## History

**History of the U.S. 1877 to Present\*** 3 cr. hrs.  
HIST 2523.W01 Online

## Humanities

**Introduction to Humanities\*** 3 cr. hrs.  
HUMS 1513.W06 Online (04/08-05/03)

Learn about online and hybrid courses at [bit.ly/KCC-course-delivery](http://bit.ly/KCC-course-delivery)

\*Course has prerequisite or testing requirements. ♦ Course designed to prepare students for college-level coursework.

# Classes Starting After March 1

\*Check [kcc.edu/schedule](http://kcc.edu/schedule) for exact dates\*

## Machine Tool

### Lubrication

MCHN 1452.960 6-10:30 p.m. Th MITC 2 cr. hrs.

HLTH 1412.420 7 a.m. - 3:30 p.m. M-F RMC  
(03/18-04/05)

HLTH 1412.430 7 a.m. - 3:30 p.m. M-F RMC  
(04/08-04/26)

## Manufacturing Technology

### Manufacturing Processes

MAFT 1232.010 1-2:40 p.m. TTh L377 2 cr. hrs.  
(03/11-05/03)

### Intro to Manufacturing Maintenance

MAFT 1312.010 11 a.m. - 12:40 p.m. TTh L377 2 cr. hrs.

### Lean and Quality Overview

MAFT 1323.W01 Online 3 cr. hrs.

### Certified Logistics Technician\*

TWDL 1223.810 5:30-8:50 p.m. MW D213 3 cr. hrs.

## Medical Laboratory Technology

### Clinical Practicum II\*

MEDT 2326.010 03-11-05/03 MTWTh 6 cr. hrs.

## Office Professional

### Successful Customer Service

BSNS 2311.810 7-8:40 p.m. Th L371 1 cr. hrs.

## Phlebotomy

### Phlebotomy Techniques Practicum\*

HLTH 1412.040 4 a.m. - 12:30 p.m. M-F RMC 2 cr. hrs.  
(03/18-04/05)

HLTH 1412.050 4 a.m. - 12:30 p.m. M-F RMC  
(04/08-04/26)

HLTH 1412.080 7 a.m. - 12 p.m. M-F RMC  
(03/18-04/12)

HLTH 1412.090 7 a.m. - 12 p.m. M-F RMC  
(04/15-05/10)

HLTH 1412.120 1-6 p.m. M-F RMC  
(03/18-04/12)

HLTH 1412.130 1-6 p.m. M-F RMC  
(04/15-05/10)

HLTH 1412.190 6:30 a.m. - 3 p.m. M-F SMH  
(03/18-04/05)  
Proof of health insurance required.

HLTH 1412.200 6:30 a.m. - 3 p.m. M-F SMH  
(04/08-04/26)  
Proof of health insurance required.

HLTH 1412.240 6 a.m. - 2:30 p.m. M-F IMH  
(03/18-04/05)

HLTH 1412.250 6 a.m. - 2:30 p.m. M-F IMH  
(04/08-04/26)

## Physical Science

### Introduction to Astronomy

PSCI 1503.W41 Online (03/11-05/03) 3 cr. hrs.

## Physical Therapist Assistant

### PTA Clinical Practicum III\*

PHTA 2234.010 (03/25-05/09/24) 4 cr. hrs.

## Political Science

### American Government\*

PLSC 1513.W06 Online (03/11-04/05) 3 cr. hrs.

## Psychology

### Introduction to Psychology\*

PSYC 1813.W03 Online (03/11-05/03) 3 cr. hrs.

### Lifespan Developmental Psychology\*

PSYC 2553.H07 Hybrid 8:30-11 a.m. W D213 3 cr. hrs.

PSYC 2553.W02 Online

PSYC 2553.W06 Online (03/11-04/05)

## Sociology

### Diversity, Equity, Inclusion & Belonging

SOCY 1613.H41 Hybrid 1-3:30 p.m. W SE02 3 cr. hrs.  
(03/11-05/03)

\*\*South Extension Center Course\*\*

### Sociology\*

SOCY 2513.H02 Hybrid 11 a.m. - 12:15 p.m. TTh L312 3 cr. hrs.

## Student Success

### Foundations for Student Success

ORIN 1541.040 11-11:50 a.m. TTh L150 1 cr. hrs.

Section reserved for Adult Education ESL students only; See advisor

Learn about online and hybrid courses at [bit.ly/KCC-course-delivery](http://bit.ly/KCC-course-delivery)

\*Course has prerequisite or testing requirements. ♦ Course designed to prepare students for college-level coursework.

Visit [www.kcc.edu/schedule](http://www.kcc.edu/schedule) for the current Spring 2024 schedule

## Accreditation

KCC is accredited by the Higher Learning Commission (HLC) which accredits degree-granting post-secondary educational institutions. The college participates in the Open Pathway and has met its next comprehensive evaluation in 2024.

Additional information about accreditation is available from KCC's director of institutional effectiveness and assessment, who serves as the accreditation liaison officer.

You can contact the Higher Learning Commission at 230 S. LaSalle St., Suite 7-500, Chicago, IL 60604, 800-621-7440 or visit [hlcommission.org](http://hlcommission.org).

The college also seeks specific programmatic accreditations in the following areas: Paramedic (Riverside), Registered Nursing, Practical Nursing, Respiratory Therapist, Physical Therapist Assistant, Medical Laboratory Technology, Phlebotomy.

## EQUAL OPPORTUNITY/AFFIRMATIVE ACTION

KCC is an equal opportunity/affirmative action employer and complies with applicable federal and state laws prohibiting discrimination, including Title IX of the Educational Amendments of 1972, Section 540 of the Rehabilitation Act of 1973, the Americans with Disabilities Act of 1990, and the CROWN Act of 2023. It is the policy of the college that no person on the basis of race, gender identity/expression, sexual orientation, sex, genetic information, creed, religion, color, marital or parental status, veteran status, age, national origin, membership in any professional group, organization or association, socioeconomic status, mental or physical disability shall be discriminated against. The CROWN Act broadens the definition of race to include "traits associated with race, including but not limited to, hair texture and protective hairstyles such as braids, locks, and twists." This includes, but is not limited to admissions, employment, financial assistance, placement, recruitment, educational programs, or activities. Lack of English skills is not a barrier to admission and participation in educational programs. Inquiries or complaints may be addressed to David Cagle, director of human resources/Affirmative Action officer; Meredith Purcell, vice president for student affairs, Title IX coordinator; or Kim Jeffreys, director of support services/Section 504 coordinator; Kankakee Community College, 100 College Drive, Kankakee, IL 60901-6505; 815-802-8100. TTY users may phone 711. Outside of Illinois, dial 1-800-526-0844.

Cagle and Purcell ensure that the college is in compliance with the federal law by handling complaints, answering questions, organizing information and relevant statistics and staying informed regarding laws which affect these areas. Jeffreys coordinates the college's services/programs that allow access to education for students with disabilities.

Check out  
NEW  
4-Week Class  
Options  
[www.kcc.edu/schedule](http://www.kcc.edu/schedule)



**Kankakee Community College**

100 College Drive • Kankakee, IL 60901

[www.kcc.edu](http://www.kcc.edu) • 815-802-8100 • fax 815-802-8101

## Open door policy

It is the policy of KCC to accept all students for admission though some specific program requirements may apply. Individuals who apply for admission to baccalaureate transfer programs or certain other programs and do not meet the admission requirements for the program of their choice may be admitted to another program appropriate to their needs and abilities.

## Rights of people with disabilities

KCC shall provide that no otherwise qualified person with a disability shall, solely by reason of disability, be excluded from the participation in, be denied the benefits of, or be subjected to discrimination under any program or activity engaged in by the college as required by Section 504 of the Rehabilitation Act of 1973 and the Americans with Disabilities Act of 1990.

Inquiries and complaints may be addressed to the director of support services, Kankakee Community College, 100 College Drive, Kankakee, IL 60901-6505; 815-802-8452.

## Consumer information: Student Right-to-Know and crime statistics

KCC discloses required information for compliance with Title IV Higher Education Act; the Higher Education Act of 1965, as amended; the Family Education Rights and Privacy Act; Student Right-to-Know Act; the Campus Security Act; and Equity in Athletics Disclosure Act on its website ([www.kcc.edu/consumerinfo](http://www.kcc.edu/consumerinfo)). Consumer information, campus security, crime statistics and other disclosures are all available on this site. Students and community members also are invited to consult the Illinois Community College Board ([www.iccb.org](http://www.iccb.org)) for additional information of interest.

For more details, please contact the vice president for student affairs at [studentaffairs@kcc.edu](mailto:studentaffairs@kcc.edu) or phone 815-802-8510.

## Sexual misconduct policy

As prohibited by applicable state and federal laws and regulations, KCC does not condone discrimination or sexual misconduct by any employee against students or by any student(s) toward another student(s).

The college has established a policy on sexual misconduct. Detailed information on the program is available at [www.kcc.edu/consumerinfo](http://www.kcc.edu/consumerinfo). For more information on the college's policy, contact the vice president for student affairs [studentaffairs@kcc.edu](mailto:studentaffairs@kcc.edu) or phone 815-802-8510.

## Drug- and alcohol-free learning and working environment policy

KCC has established a drug- and alcohol- free learning and working environment policy. The policy establishes an educational awareness program as well as descriptions of prohibited substances and expected standards of conduct. A detailed brochure is available in Student Affairs and at [www.kcc.edu/consumerinfo](http://www.kcc.edu/consumerinfo).

• • •

## Política de libre acceso

Es la norma de KCC aceptar a todo solicitante como estudiante, excepto en los programas para los cuales existen requisitos específicos. Los individuos que no reúnan los requisitos para algún programa podrán ser admitidos a otro programa apropiado a sus necesidades y habilidades.

## Derechos de los discapacitados

KCC se asegurará de que a ningún discapacitado que cualifique, sólo por ser discapacitado se le excluya de la participación, o se le denieguen los beneficios, o se le discrimine en programa alguno, o actividad del colegio, según los requisitos de la sección 504 del Acta de Rehabilitación de 1973 y del Acta para Estadounidenses con Discapacidades de 1990.

Si tiene preguntas o un motivo de queja, se puede comunicar con el decano de servicios de aprendizaje en KCC, 100 College Drive, Kankakee, IL 60901-6505; 815-802-8452.